

Data Sheet



**Brackish Water
 Reverse Osmosis (RO) Membranes**
LG BW 4021 R
 High Rejection

Im Mittelfeld 4-6
 63500 Seligenstadt
 Tel.: +49 6182 89 666 66
 Fax + 49 6182 89 666 33

Offizieller Distributor in Deutschland

Overview

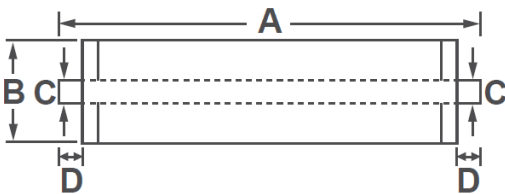
LG Chem's NanoH₂O™ brackish water RO membranes serve various municipal and industrial applications and have been operating in the major utilities around the world. Incorporating innovative Thin Film Nanocomposite (TFN) technology, all LG BWRO membranes provide superior performance along with intrinsic anti-fouling property and are suitable for applications where consistent and reliable performance is a must.

LG BW R membranes offer a combination of high rejection and reliability: suitable for high salinity brackish water and wastewater reuse applications.

Product Specifications

Active Membrane Area, ft ² (m ²)	Permeate flow rate, GPD (m ³ /d)	Stabilized Salt Rejection, %	Minimum Salt Rejection, %	Feed Spacer, mil
34 (3.2)	1,000 (3.8)	99.6	99.3	28

Test Conditions : 2,000 ppm NaCl at 25°C (77°F), 225 psi (15.5 bar), pH 7, Recovery 8%.
 Permeate flows for individual elements may vary +/-20%.



A, mm (in.)	B, mm (in.)	C, mm (in.)	D, mm (in.)	Weight, kg (lbs.)
533 (21)	100 (3.9)	19 (0.75)	29 (1.1)	2.3 (5.1)

Operating Specifications

For more information and operating guidelines, visit www.lgwatersolutions.com

Max. Applied pressure	600 psi (41 bar)
Max. Chlorine concentration	< 0.1 ppm
Max. Operating temperature	45°C (113°F)
pH Range, Continuous (Cleaning)	2-11 (2-12)
Max. Feedwater turbidity	1.0 NTU
Max. Feedwater SDI (15 mins)	5.0
Max. Feed flow	16 gpm (3.6 m ³ /h)
Max. Pressure drop (ΔP) for each element	15 psi (1.0 bar)

The information and data contained herein are deemed to be accurate and reliable and are offered in good faith, but without guarantee of performance. LG Chem assumes no liability for results obtained or damages incurred through the application of the information contained herein. Customer is responsible for determining whether the products and information presented herein are appropriate for the customer's use and for ensuring that customer's workplace and disposal practices are in compliance with applicable laws and other governmental enactments. Specifications subject to change without notice. NanoH₂O is the Trademark of The LG Water Solutions or an affiliated company of LG Chem. All rights reserved. © LG Chem, Ltd.

Rev. C (03.15)